

Knoppingsholme A0047

Site Type	farmstead
Site Name	Knoppingsholme,
Other Name(s)	Knoppingholme [on all O.S. maps.]
Ownership	Knoppingsholme Farm, Tasset, Hexham, NE48 1JZ
Related Sites	

LOCATION

National Grid Reference	NY 7840 8564	Km Square	NY 7885
TAG 2006 Atlas : Map	M1	Air Photo. No	Run-E--OS/74062--076

Modern Parish	Tasset
Historic Parish & Township	Bellingham -- Charlton West, Thorneyburn -- Tasset West

LISTINGS

Scheduled Ancient Monument	x	Listed	x
National Monument Record	x	English Heritage Pastscape	x
Historic Environment Record	15063	Tasset & Greenhaugh HVA	47
Grundy	TAR 66	Tasset & Greystead Books	MM- 40 LX-38

EVIDENCE

Extant

DESCRIPTION

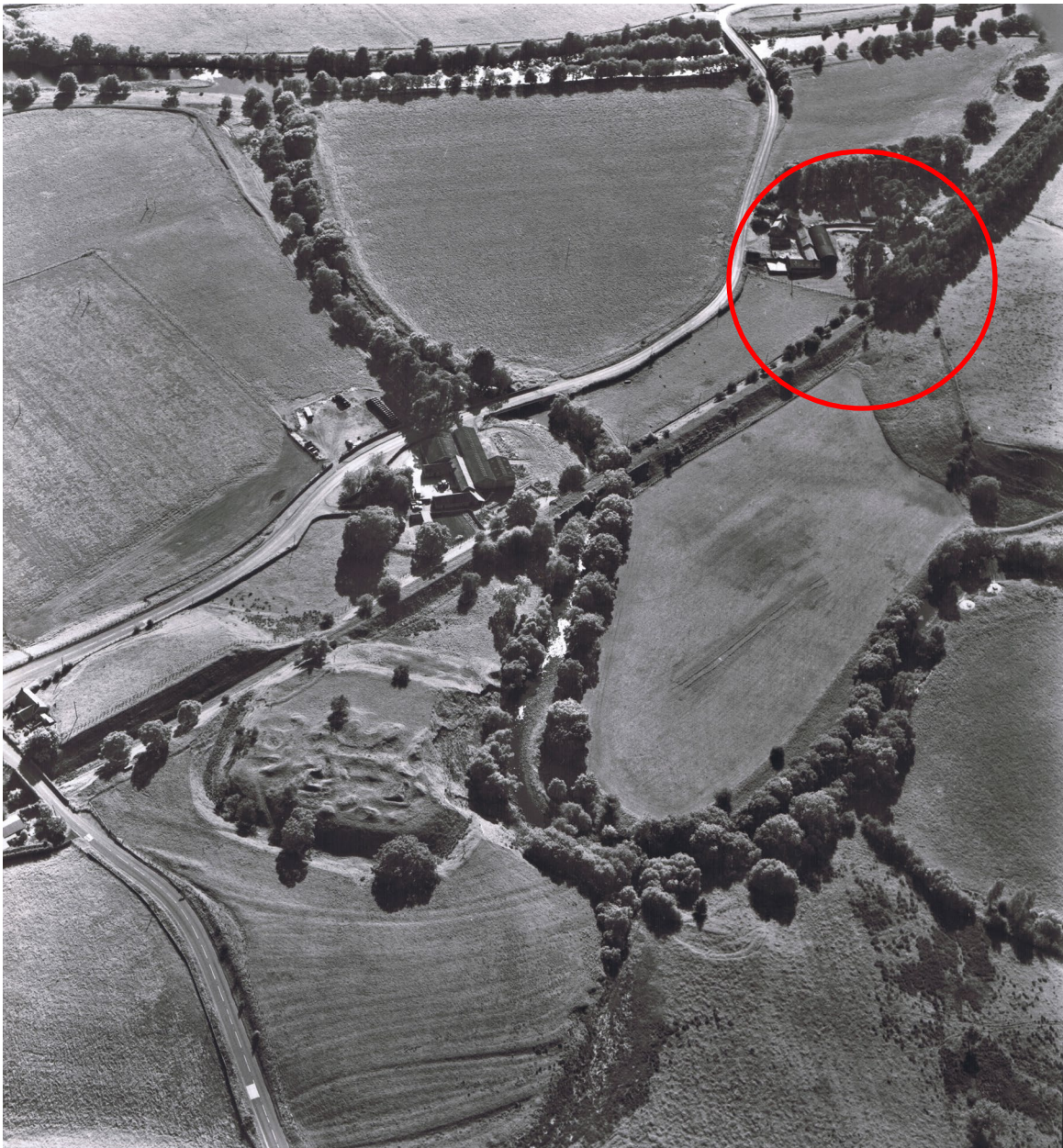
Standard two storey three bay form with a lower byre and granary attached to the side. Dressed stone. The Welsh slate roofs of both are shallow pitched with the coping retuning in a characteristic C19th way. The farm buildings too, look entirely C19th with their segmental arches and small slotted windows. The masonry of the house however, is of earlier type, softer and more worn; also house and buildings are disposed at an odd, irregular angle to each other in a most un-C19th way. Perhaps the C19th details only reflect a partial re-build. Modern windows. [After Grundy 1987]
The attached byre and granary were converted to living accommodation in 2010.
Small walled garden.

DISCLAIMER

This is a record of Tasset's historical and archaeological sites. It is published under a Creative Commons License.

Please note that Tasset Archive Group members do not guarantee either accuracy or completeness of this record. Data are derived from a variety of sources including its original work; some of these may be copyright. Use of data for any legal purpose should be checked against primary sources. Comments and suggestions to tassetarchivegroup1@btinternet.com

IMAGES



NOTES

Grundy commented: "Most of the details suggest an early C19th date but there are one or two curious discrepancies"

REFERENCES

	Grundy, J. (1987). <i>The Historic Buildings of the Northumberland National Park</i> .	
--	--	--

DISCLAIMER

This is a record of Tasset's historical and archaeological sites. It is published under a Creative Commons License.

Please note that Tasset Archive Group members do not guarantee either accuracy or completeness of this record. Data are derived from a variety of sources including its original work; some of these may be copyright. Use of data for any legal purpose should be checked against primary sources. Comments and suggestions to tassetarchivegroup1@btinternet.com



The Tasset Digital Archive by Tasset Archive Group is licensed under a Creative Commons Attribution-NonCommercial-NoDerivatives 4.0 International License.

DISCLAIMER

This is a record of Tasset's historical and archaeological sites. It is published under a Creative Commons License.

Please note that Tasset Archive Group members do not guarantee either accuracy or completeness of this record. Data are derived from a variety of sources including its original work; some of these may be copyright. Use of data for any legal purpose should be checked against primary sources. Comments and suggestions to tarsetarchivegroup1@btinternet.com