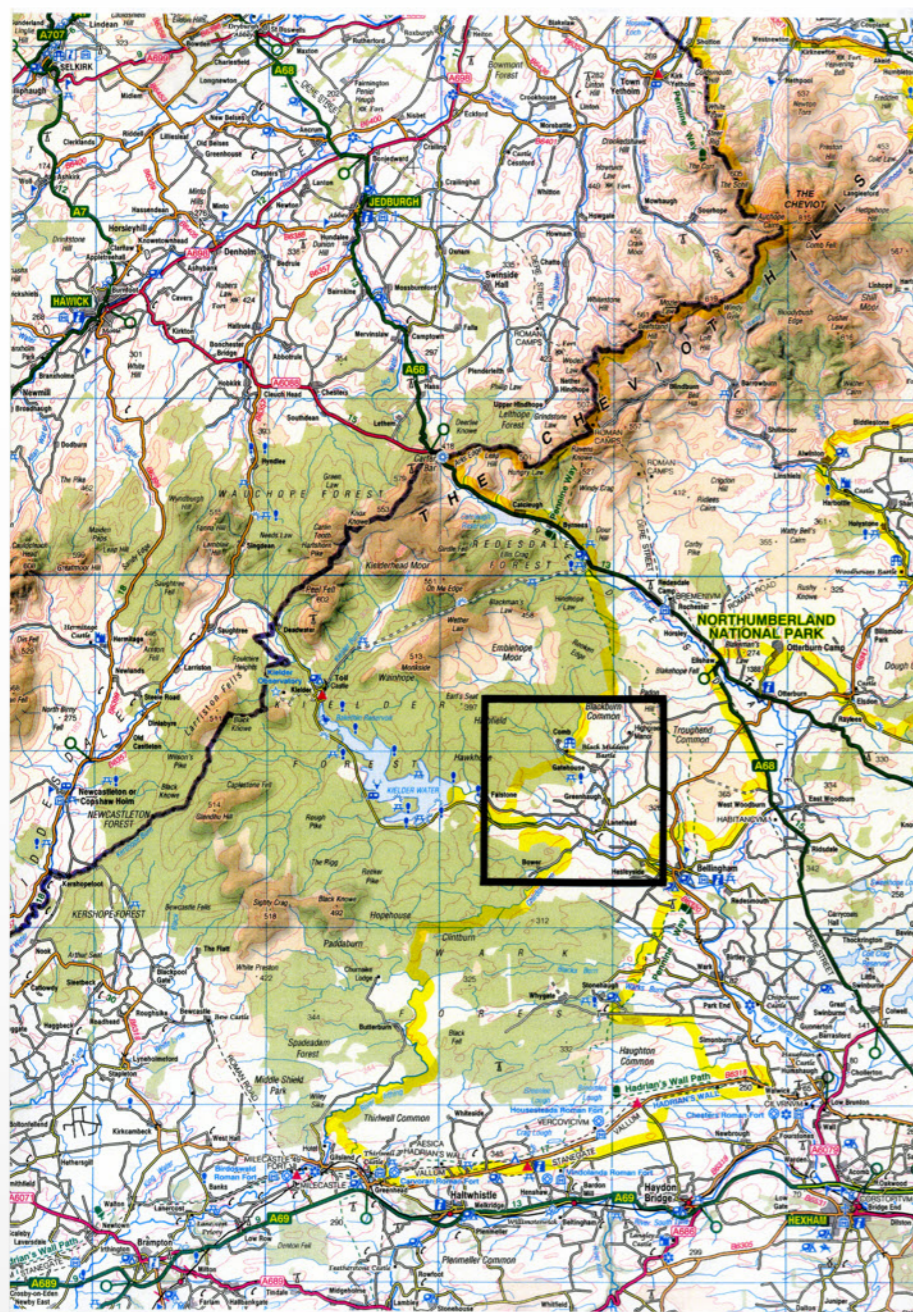
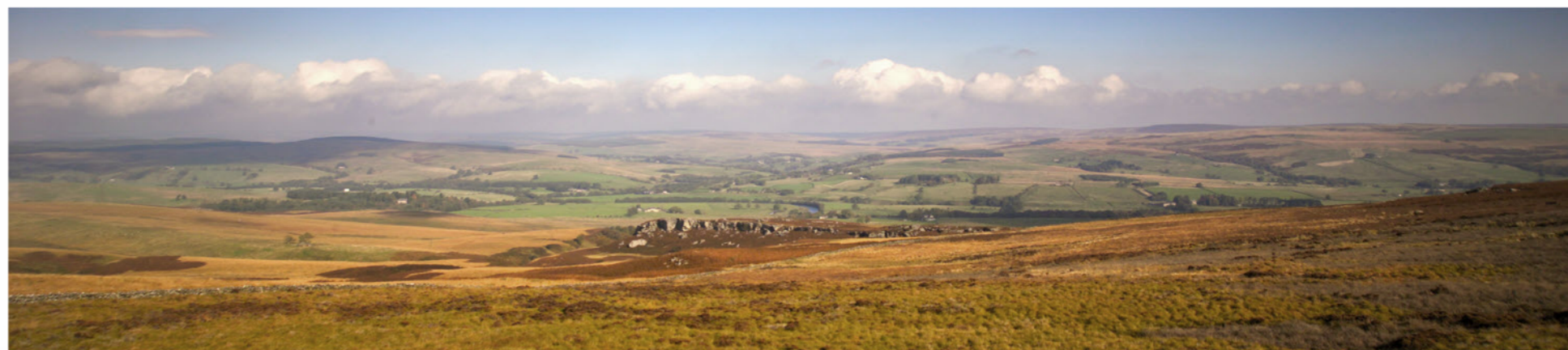


THIS IS TARSET



Location Map based on OS Travel Map 1:250 000 scale © Crown copyright 2008. All rights reserved. Licence number 100043254.



The Taret valley from the south

Taret and Greystead is a large parish with a small population. In 192 Km² of Upper North Tynedale, Northumberland, it has 124 households and around 250 adult inhabitants.

Its economy depends on hill farming, forestry and tourism. It is home to some notable businesses (like Unison Colour, Bloodaxe Books), two churches (one now closed), a highly regarded first school and an historic pub at Greenhaugh, the Holly Bush, which was an old droving inn.

While there are several deserted medieval villages, plenty of evidence of Iron Age/Romano-British settlement, and earlier features, the area has to date been best known for its bastle architecture and the bitter feuding of its reiving period.

Early agriculture and extractive industries have also left their mark all over the landscape. Taret is rich in flora and fauna, and there are several SSSIs.

ABOUT THE TARSET ARCHIVE GROUP

The group was set up in 2003 to look at all aspects of Taret's environment, geological, historical and ecological. It has worked by developing projects in accordance with people's interests. Anyone in the community is welcome to contribute. All work for the group has been voluntary. The focus of study has been the Taret valley itself, centred on the historic settlement of Greenhaugh (NY795 874). Its main aim has been the compilation of a digital database.

Activities TAG has arranged public walks & talks by experts, mounted a bi-annual open day to display its work to the wider community, and worked on a diverse range of subjects. It has also successfully instigated action on the collapsing state of some of Taret's built heritage, notably old mills, lime kilns and bastles, as well as Taret Castle where conservation work has recently begun.

Publications TAG commissioned a large archive of Taret images from Simon Fraser Photography, from which it produced packs of heritage cards of the area. In 2006, working from air photographs and its own surveys, it published The Taret Atlas of Historical and Archaeological Sites which increased the number of known sites in the area by a factor of ten. TAG has a web presence on the Taret community website at www.taret.co.uk

Current members of the core group are Jan Ashdown, coordinator; Tim Bird, photographer; Michael Money, archaeology project leader; Sarah Hallberg, finance manager; Kate Hersey, David McCracken, Alistair Murray, Kate Purdy and Jane Watkins, with the assistance of Mark Hall, Colin Watson, Mary Lou Downie and Martin Downie.



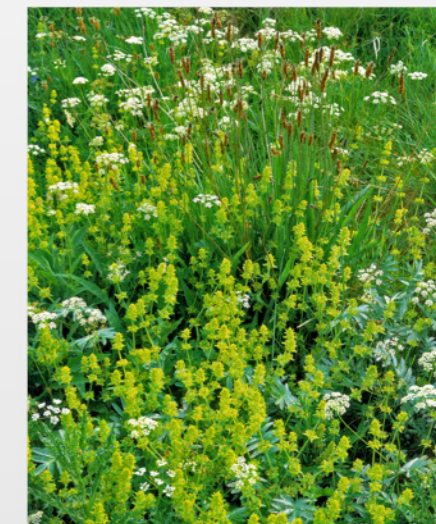
Confluence of Taret Burn with the North Tyne



Taret valley from above Clough Head



Taret valley from Blackheughhead



Taret road verge flowers